

# RIVERHOMES

43 Thornes House The Residence  
Nine Elms

£4,950 Per Month



## 43 Thornes House The Residence Nine Elms

### Description

A luxurious two double-bedroom, two-bathroom 8th floor apartment in Thornes House. Thornes house is a Manhattan style building, part of The Residence - with far reaching views over London. The Residence features a concierge, lift service, gym, media room, board room and a dedicated building manager. With dual-aspect open plan living, the flat is flooded with natural light. Floor-to-ceiling doors lead to a balcony with far reaching views. The kitchen is finished to a very high standard with integrated Miele appliances including

Hot Tap. The master bedroom comprises an en-suite bathroom benefiting from a dressing area with fitted wardrobes. There is a further double-bedroom with fitted wardrobes and use of the large family bathroom. Thornes House is ideally positioned close to Vauxhall station and extensive transport links. There are tree-lined footpaths, dedicated cycle lanes, Thames Clipper river service and many bus routes. EPC Rating B. Tenant fees may apply.

### KEY FEATURES

- 24hr Concierge
- Two Bedroom
- Two bathroom
- Residents Gym
- On Site Building Maintenance



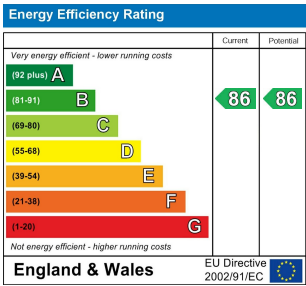


43 Thornes House The Residence  
Nine Elms

South West & Central London Branch  
1 - 3 Lower Richmond Road  
London  
SW15 1EJ

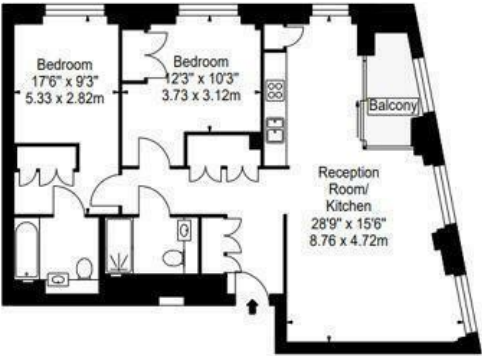
020 8788 6000  
www.riverhomes.co.uk

ENERGY PERFORMANCE CERTIFICATE

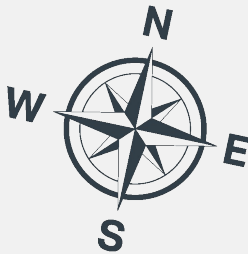


KEY INFORMATION

Local Authority: Wandsworth  
Internal Area: sq ft  
Garden Area: acre(s)  
No of Bedrooms: 2



EIGHTH FLOOR



World Waterside Ltd trading as riverhomes for themselves and its clients give notice that 1: They are not authorised to make or give any representations or warranties in relation to the property either here or elsewhere, either on their own behalf or on behalf of their client or otherwise. 2: These particulars do not form part of any offer or contract and must not be relied upon as statements or representations of fact. Any areas, measurements or distances are approximate. The text, photographs and plans are for guidance only and are not necessarily comprehensive. 3: It should not be assumed that the property has all necessary planning, building regulation or other consents and any services, equipment or facilities have not been tested. 4: Lease details, service charges, ground rent (where applicable) and council tax are given as a guide only and should be checked and confirmed by your Solicitor prior to exchange of contracts. 5: They assume no responsibility and any intending purchasers or tenants must satisfy themselves by inspection or otherwise as to the correctness of each of the statements contained within these particulars. If you require clarification of any points please contact us.